

# Engineering Technician

\*Course examples. Full listing includes more.  
 +- SACA Certification Associated W/ Course / # - MSSC Certification

## SAFETY

### ELECTRIC BATTERIES

Battery Power Converters

### ELECTRICAL

Motion Control Single AXIS (W40831)

### MECHANICAL

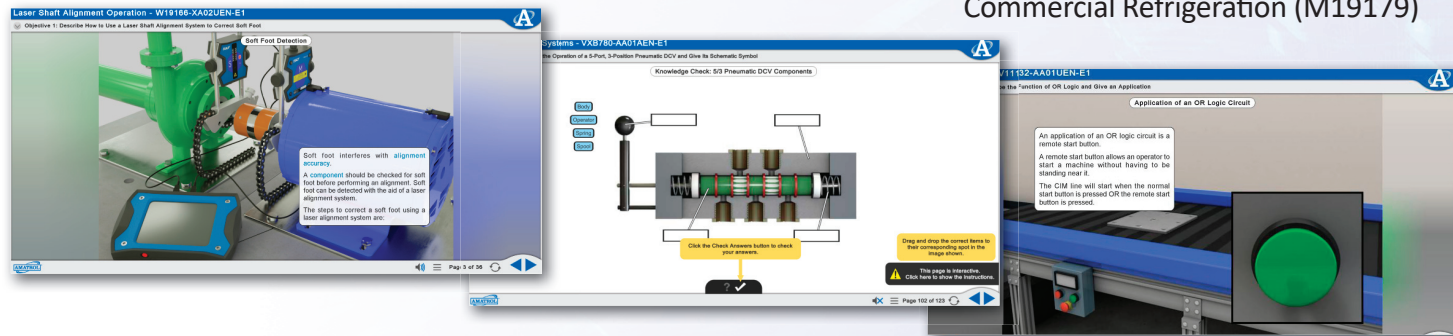
Laser Shaft Alignment (W18433)+

### FLUID POWER

Hydraulic Maintenance (WX19290)+

### AUTOMATION

Smart Factory Ethernet (WX33574)+



# Facilities Technician

\*Course examples. Full listing includes more.  
 +- SACA Certification Associated W/ Course / # - MSSC Certification

## SAFETY

Safety Practices & Regulations (WXSA101)

### ELECTRIC BATTERIES

End of Life - Recycling

### ELECTRICAL

Electric Relay Control (V11132)+

### MECHANICAL

Mechanical Fabrication (W19004)

### FLUID POWER

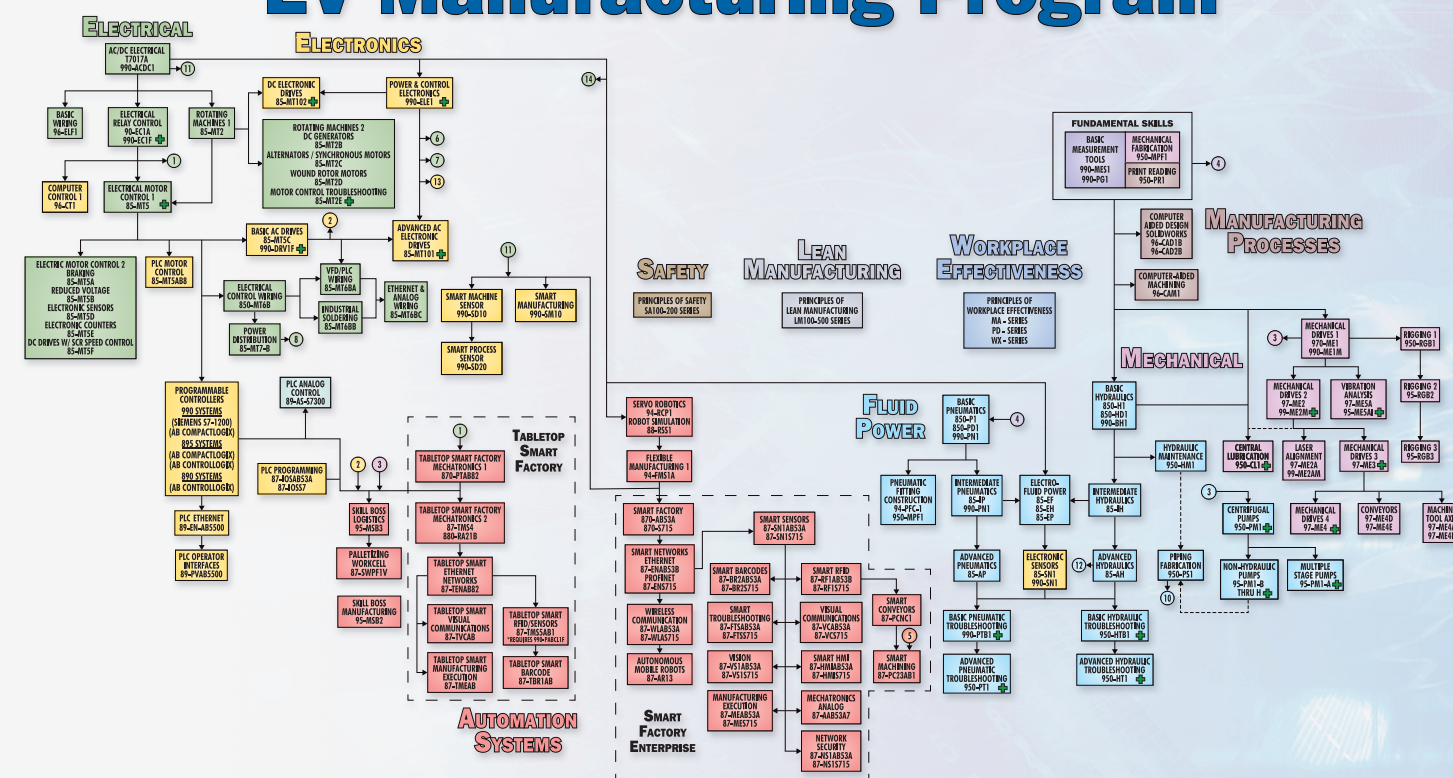
Basic Pneumatics (VXB834)+

### HVAC

Commercial Refrigeration (M19179)



# EV Manufacturing Program



# EV MANUFACTURING PROGRAM

2400 Centennial Blvd.  
 Jeffersonville, Indiana 47130 U.S.A.  
 Phone: 812.288.8285 • Fax: 812.283.1584  
 Toll Free in USA & Canada: 800.264.8285  
 Email: contact@amatrol.com • www.amatrol.com



PRINTED IN U.S.A. • COPYRIGHT © 2023 • FORM 6742-A



# ELECTRIC VEHICLE MANUFACTURING PROGRAM

## EV Battery Production Associate

\*Course examples. Full listing includes more.  
+ - SACA Certification Associated W/ Course / # - MSSC Certification

### SAFETY

Lockout/Tagout (WXSA105)+

### BASIC ELECTRICAL

AC/DC Electrical (V11133)+

### BASIC MECHANICAL

Mechanical Drives 1 (W19146)+

### BASIC FLUID POWER

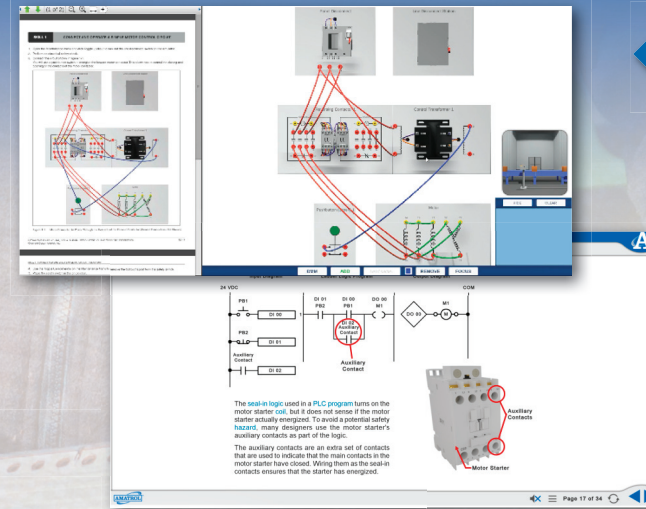
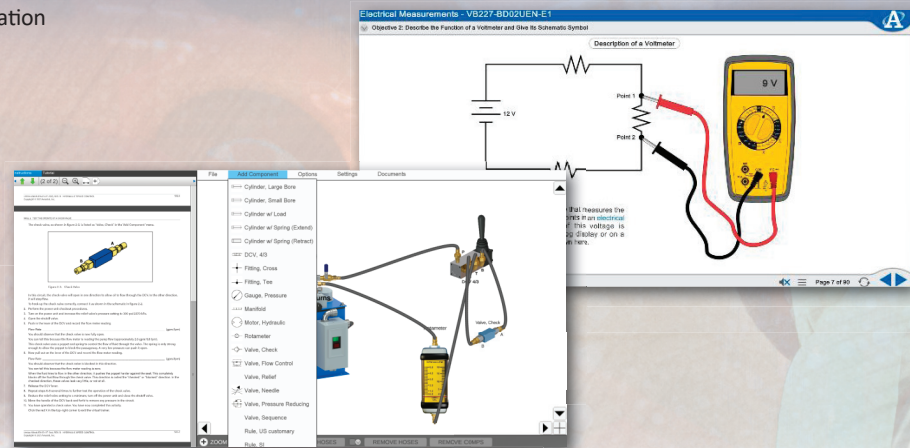
Basic Hydraulics (VXB831)+

### BASIC AUTOMATION

Skill Boss Manufacturing (95-MSB1)#

### ELECTRIC BATTERIES

Battery Basics



## Manufacturing Technician Level 1

\*Course examples. Full listing includes more.  
+ - SACA Certification Associated W/ Course / # - MSSC Certification

### SAFETY

### ELECTRIC BATTERIES

Battery Safety Considerations

### ELECTRICAL

Electric Motor Control (VX17401)+

### MECHANICAL

Rigging Systems 1 (W18689)+

### FLUID POWER

Intermediate Hydraulics (WXB832)+

### AUTOMATION

Tabletop Mechatronics (WX25050)+

## Smart Factory Engineer

\*Course examples. Full listing includes more.  
+ - SACA Certification Associated W/ Course / # - MSSC Certification

### SAFETY

### ELECTRIC BATTERIES

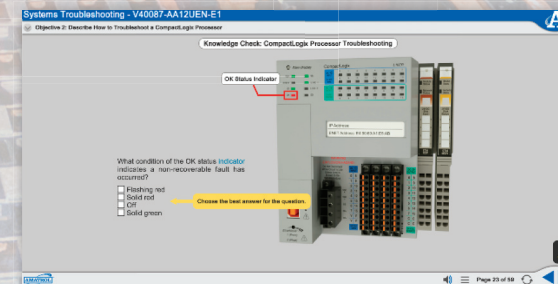
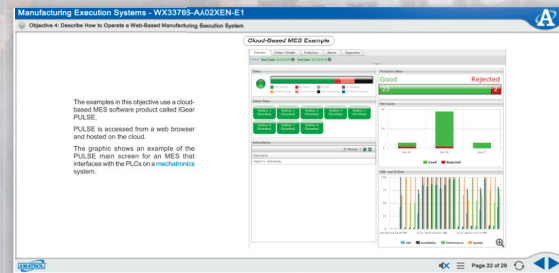
Battery Power Converters

### SIEMENS

Smart Factory PROFINET (WX33740)+

### ROCKWELL AUTOMATION

Smart Factory Visual Communication (WX33767)+



## Manufacturing Technician Level 2

\*Course examples. Full listing includes more.  
+ - SACA Certification Associated W/ Course / # - MSSC Certification

### SAFETY

### ELECTRIC BATTERIES

Battery Applications

### ELECTRICAL

PLC/VFD Wiring System (WX17461)

### MECHANICAL

### FLUID POWER

### AUTOMATION

CESMII Smart Sensor Kit (990-SM10)

