



**AMATROL**®

**POWER & ENERGY**

**FUNDAMENTALS - MAINTENANCE - TROUBLESHOOTING**

# MAINTENANCE TRAINING FOR POWER & ENERGY

**FAULTPRO™**  
COMPUTER-BASED FAULT INSERTION

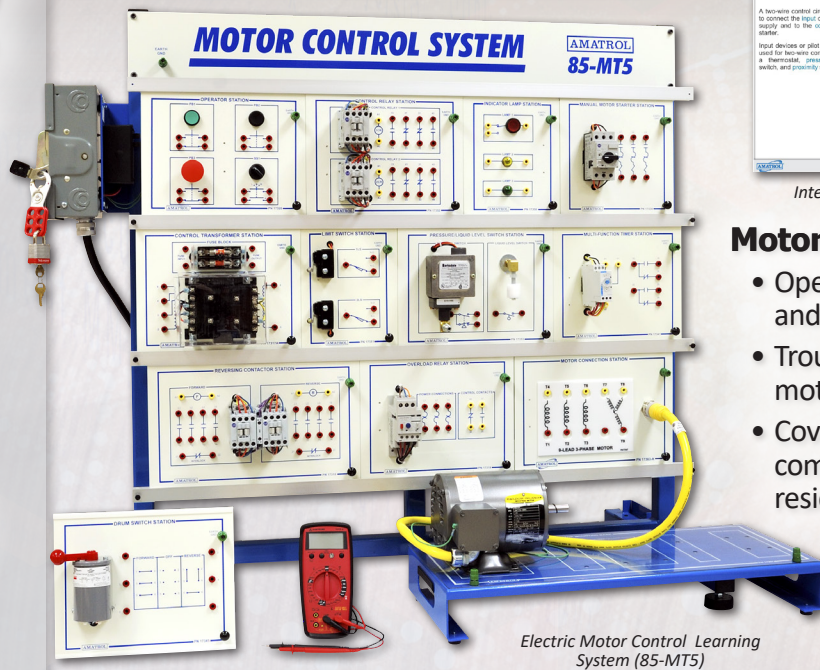
Industry's Only Electronic Troubleshooting System



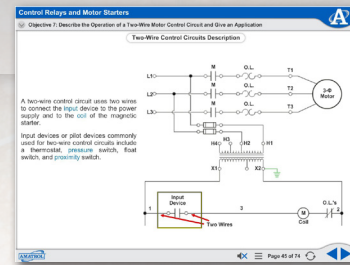
Random Fault Mode

- ✓ Set and tailor faults to test a student's weaknesses and turn them into strengths
- ✓ Solve real-world problems encountered on the job
- ✓ Insert electronic faults safely, protecting both students and equipment from damage
- ✓ Troubleshoot electronic faults in more than two dozen training systems spanning seven different technologies

## ELECTRICAL



Electric Motor Control Learning System (85-MTS)



Interactive Multimedia Curriculum

### Motor Control Training:

- Operation, installation, and design skill-building.
- Troubleshoot real-world motor control circuits.
- Covers industrial, commercial, and residential applications.

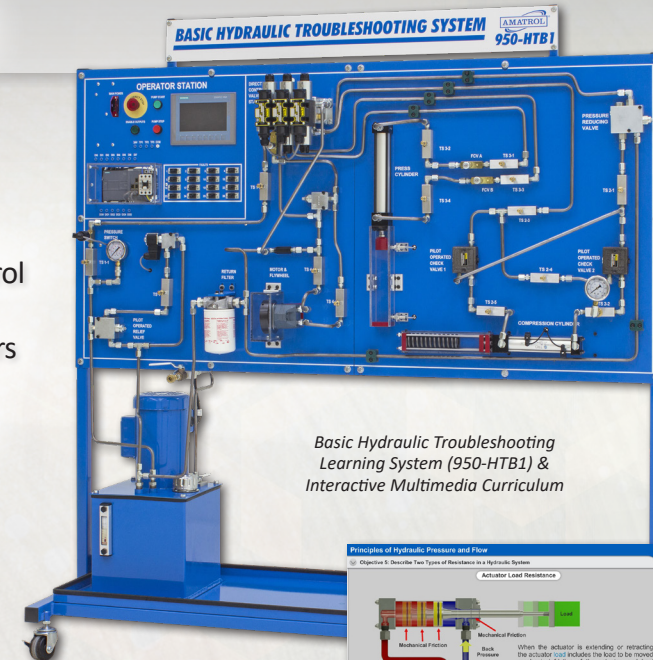
**FAULTPRO™**  
COMPUTER-BASED FAULT INSERTION

## FLUID POWER

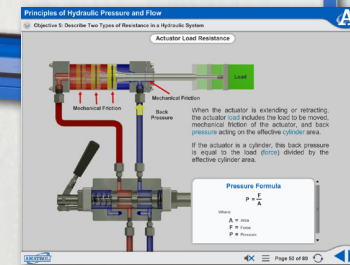
### Hydraulic Troubleshooting Training:

- Troubleshoot hydraulic motors, directional control valves & cylinders.
- Over 35 faults for learners to practice skills.
- Provides foundation for industry-standard certifications.

**FAULTPRO™**  
COMPUTER-BASED FAULT INSERTION

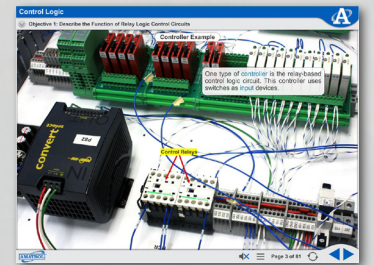


Basic Hydraulic Troubleshooting Learning System (950-HTB1) & Interactive Multimedia Curriculum

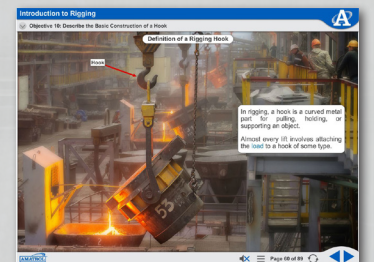


## eLearning

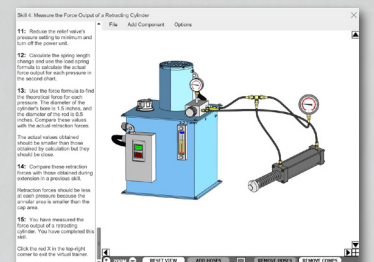
Amatrol's eLearning curriculum features a highly-interactive, multimedia format that includes stunning 3D graphics and videos, voiceovers of all text, and interactive quizzes and exercises designed to appeal to learners with different learning styles.



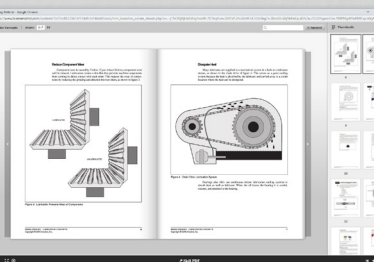
970-ME1 Multimedia



970-ME1 Multimedia



970-ME1 Multimedia

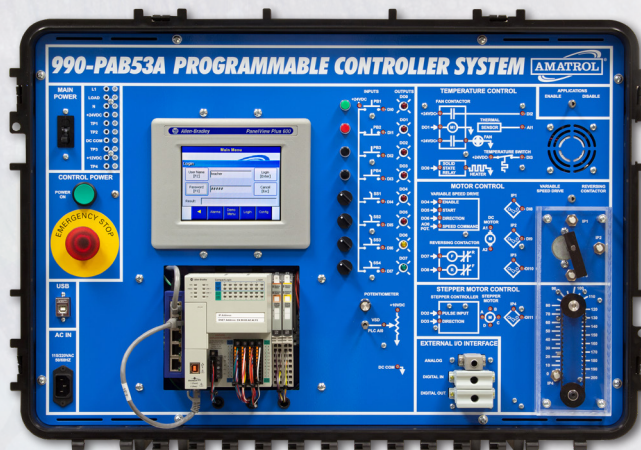


970-ME1 Multimedia

\*Some Training Systems Without Multimedia Curriculum Also Available in Optional eBook Format



## ELECTRONICS

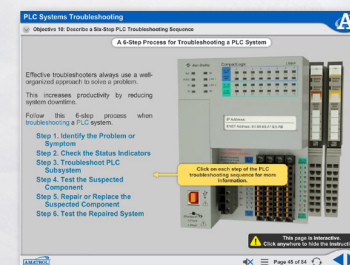


Portable PLC Learning System – AB CompactLogix L16 (990-PAB53A)

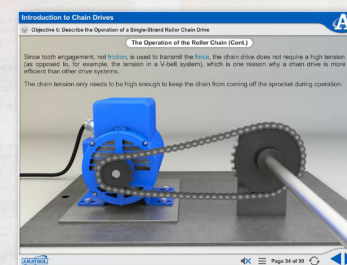
**FAULTPRO™**  
COMPUTER-BASED FAULT INSERTION

### PLC Programming Training:

- Programming, operation, and applications of PLCs.
- Features Allen-Bradley L16 CompactLogix 5300 PLC.
- Analog, discrete, data, and networking commands.



Interactive Multimedia Curriculum



Interactive Multimedia Curriculum

### Mechanical Drives Training:

- Align, install, operate, and troubleshoot various motor drive systems.
- Experience real-world industrial components.
- Designed for safe, efficient hands-on training.

## MECHANICAL



Mechanical Drives 1 Learning System (970-ME1)

Hands-on simulators

Job-ready competencies

eAssessment

Pneumatic Troubleshooting System with FaultPro

# UNMATCHED POWER & ENERGY MAINTENANCE TRAINING

Amatrol's eLearning library features modules that cover valuable technical skills conveniently organized into the courses below. Altogether, Amatrol's eLearning library offers comprehensive training and learning you can't find anywhere else.

| CATEGORY                       | BASIC  | INTERMEDIATE  | ADVANCED   |
|--------------------------------|--|---|--|
| <b>Electrical</b>              | <b>AC/DC Electrical Systems</b> (990-ACDC1)<br><b>Basic Wiring</b> (950-ELF1)<br><b>Electrical Relay Control</b> (990-EC1)<br><b>Rotating Machines</b> (85-MT2)  | <b>Electrical Motor Control 1</b> (85-MT5)<br><b>Electrical Control Wiring</b> (85-MT6)<br><b>Electrical Motor Control 2</b> (85-MT5 A-F)   | <b>Power Distribution</b> (85-MT7-B)<br><b>AC Electronic Drives</b> (85-MT101)<br><b>DC Electronic Drives</b> (85-MT102)<br><b>Electric Motor Troubleshooting</b> (85-MT2E)  |
| <b>Electronics</b>             | <b>Programmable Controllers</b><br>(Allen-Bradley 890-AB5500 with 890-PECB or 990-PAB53AF)<br><b>Power and Control Electronics</b> (990-ELE1)  | <b>ControlNet</b> (89-CN-AB5500)<br><b>Data Highway Ethernet</b> (89-EN-AB5500)<br><b>PLC Analog Control</b> (89-AS)<br><b>PLC Process Control</b> (89-PC-AB5500)   | <b>Device Level Networks</b> (89-RIO-AB5500)<br><b>PLC Operator Interface</b> (89-PVAB5500)  |
| <b>Process Control</b>         | <b>Level &amp; Flow Process Control</b> (T5552)  | <b>Thermal Process Control</b> (T5553)<br><b>Data Acquisition</b> (T5553-R1A)<br><b>Analytical Process Control</b> (T5554)<br><b>Pressure Process Control</b> (T5555)   |  |
| <b>Thermal</b>                 |  | <b>Steam Systems</b> (950-SH1)  |  |
| <b>Fluid Power</b>             | <b>Basic Hydraulics</b> (850-H1 and 990-BH1)<br><b>Basic Pneumatics</b> (850-P1 and 990-PN1)   | <b>Intermediate Hydraulics</b> (85-IH or 990-IH)<br><b>Electro-Fluid Power</b> (85-EH)<br><b>Electronic Sensors</b> (85-SN1)<br><b>Intermediate Pneumatics</b> (85-IP or 990-PN1)<br><b>Pneumatic Fitting Construction</b> (94-PFC-1) | <b>Advanced Hydraulics</b> (85-AH)<br><b>Hydraulic Troubleshooting</b> (950-HT1)<br><b>Piping Fabrication</b> (950-PS1)<br><b>Advanced Pneumatics</b> (85-AP)<br><b>Pneumatic Troubleshooting</b> (950-PT1)<br><b>Hydraulic Maintenance</b> (950-HM1)<br><b>Basic Hydraulic Troubleshooting</b> (950-HTB1) |
| <b>Mechanical</b>              | <b>Mechanical Fabrication</b> (950-MPF1)<br><b>Mechanical Drives 1</b> (970-ME1)   | <b>Mechanical Drives 2</b> (97-ME2)<br><b>Rigging 1</b> (950-RG1)<br><b>Mechanical Drives 3</b> (97-ME3)<br><b>Laser Alignment</b> (97-ME2A)<br><b>Central Lubrication</b> (950-CL1)<br><b>Mechanical Drives 4</b> (97-ME4)           | <b>Rigging 2</b> (95-RG2)<br><b>Rigging 3</b> (95-RG3)<br><b>Conveyors</b> (94-ME4-D & E)<br><b>Centrifugal Pumps</b> (950-PM1)<br><b>Multiple Stage Pumps</b> (95-PM1-A)<br><b>Non-Hydraulic Pumps</b> (95-PM1 B-H)<br><b>Vibration Analysis</b> (95-ME5A1)   |
| <b>Safety</b>                  | <b>Safety Practices and Regulations</b> (MXSA101)<br><b>Personal Protective Equipment</b> (MXSA102)<br><b>Hazardous Communication</b> (MXSA103)<br><b>Confined Spaces</b> (MXSA104)<br><b>Lockout/Tagout</b> (MXSA105)<br><b>Accident Response</b> (MXSA106) | <b>Overhead Crane Safety</b> (MXSA206)  |  |
| <b>Workplace Effectiveness</b> | <b>Mathematics</b> (MXMA101)<br><b>Principles of Advanced Manufacturing</b> (MXAM101)<br><b>Communication Skills</b> (MXPD101)<br><b>Conflict Resolution</b> (MXPD102)<br><b>Working in Groups</b> (MXPD103)   |   | <b>Trigonometry</b> (MXMA304)  |

2400 Centennial Blvd.  
 Jeffersonville, Indiana 47130 U.S.A.  
 Phone: 812.288.8285 • Fax: 812.283.1584  
 Toll Free in USA & Canada: 800.264.8285  
 Email: contact@amatrol.com • www.amatrol.com

