



AMATROL®

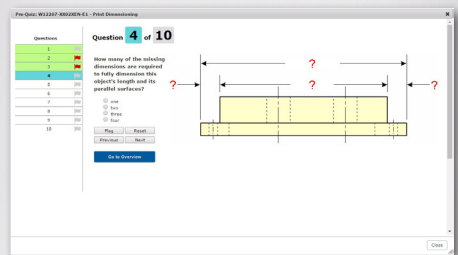
PACKAGING INDUSTRY LEARNING SYSTEMS

SKILL BUILDING — TROUBLESHOOTING — COMPREHENSIVE TRAINING

PROVEN PACKAGING TRAINING BUILDS INDUSTRY-READY SKILLS

eASSESSMENT

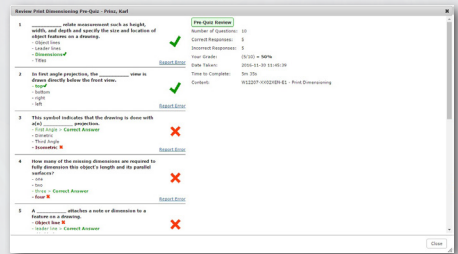
- Assess individuals, departments, or entire organizations



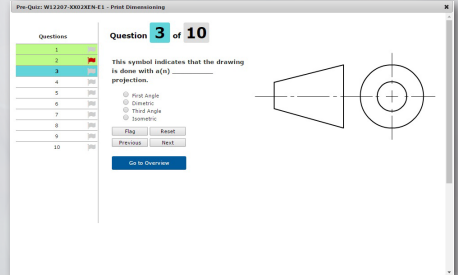
Question 3 of 7
Based on the table above, which of the materials listed can be attached to a capacitor sensor at the greatest distance?

MATERIAL	DIELECTRIC CONSTANT (ε _r)
Vacuum	1.00000
Air	1.00059
Bakelite	4.9
Fused Quartz	3.78
Pyrex Glass	5.6
Polystyrene	2.56
Teflon	2.1
Neprene Rubber	6.7
Nylon	3.4
Paper	3.7
Strontium Nitrate	233

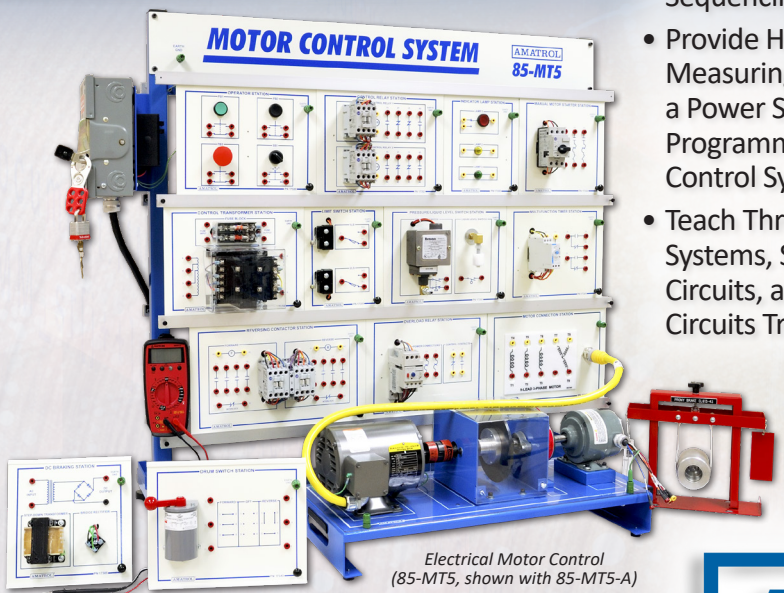
- Reveal strengths and identify weaknesses



- Reduce training cost through focus on knowledge gaps



Teach Key Concepts and Industry Skills



Electrical Motor Control (85-MTS, shown with 85-MTS-A)

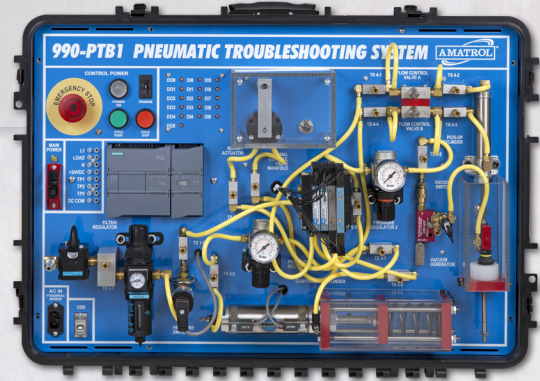
- Cover Basics Including Electrical Wiring, Circuit Analysis & Protection, & Sequencing Control
- Provide Hands-On Skills in Measuring the Output of a Power Supply and Programming Motion Control Systems
- Teach Three-Wire Control Systems, Sequence Control Circuits, and Motor Control Circuits Troubleshooting

Reduce Downtime with Packaging Skill-Building

- Teach Key Fasteners, Shaft Alignment, Chain Tensioning, Spur Gear Drives, and Sleeve Couplings
- Teach Topics Like Bedplate Function and Construction, Types of Shaft Material, Measuring Spur Gear Backlash, and more
- Hands-on Training with Belt, Chain, Shaft and Gear Drives



Mechanical Drives (970-ME1)



Pneumatic Troubleshooting (990-PTB1)

Available with
FAULTPRO
COMPUTER-BASED FAULT INSERTION SOFTWARE

Teach PLC Programming and Troubleshooting

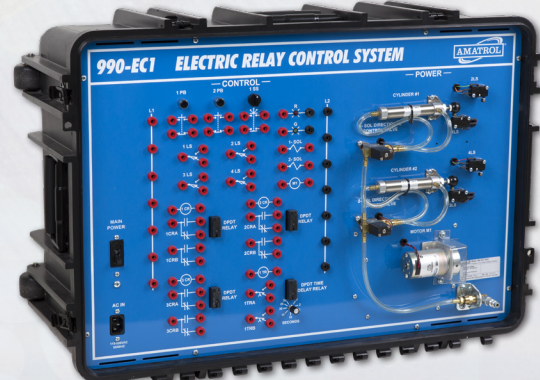
- Provide PLC Programming Training on Industry-Leading Allen-Bradley and Siemens PLCs
- Offer Hands-On PLC Skills Like Troubleshooting Variable Speed Drives, Stepper Motors, and Temperature Control Applications
- Use Amatrol's FaultPro, the Industry's Premier Fault Troubleshooting Software to Electronically Insert Faults



PLC Programming & Operation - Allen-Bradley CompactLogix L16 (990-PAB53AF)

Available with

FAULTPRO
COMPUTER-BASED FAULT INSERTION SOFTWARE



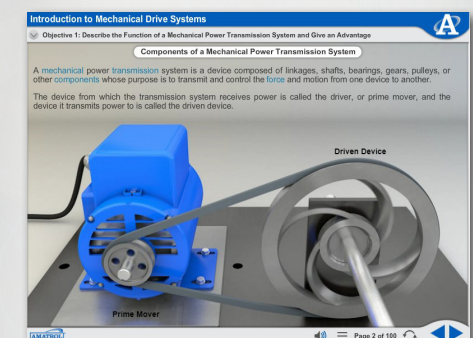
Electrical Relay Control (990-EC1F)

Provide Portable Training at Numerous Facilities

- Utilize Portable Training in Regulating Electric Motors and Fluid Power Actuators.
- Hands-on Learning with Relay Control Panel, and Pneumatic and Electric Power Components.
- Teach Control Circuit Design, Sequencing Control, Multiple Cylinder Control, and more.

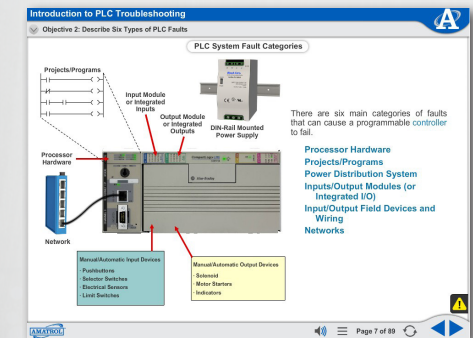
eLEARNING

- Hundreds of courses across various categories, including Packaging



Introduction to Mechanical Drive Systems

- Best instructional design practices



Introduction to PLC Troubleshooting

- Wide range of interactivity to suit anyone's learning style



Pneumatic DCV Applications

Amatrol's Learning Systems Feature Real-World, Heavy Duty Components And Extensive Curriculum

UNMATCHED PACKAGING TRAINING

Amatrol's Packaging Program combines maintenance technician training courses with world-class simulators. Industry-standard components prepare learners for successful careers in the packaging industry. Amatrol offers unrivaled theoretical and hands-on skills in areas such as electrical, fluid power, mechanical, electronics, and many more!

CATEGORY	BASIC	INTERMEDIATE	ADVANCED
Electrical	AC/DC Electrical Systems (990-ACDC1) Basic Wiring (950-ELF1) Electrical Relay Control (990-EC1) Rotating Machines 1 (85-MT2)	Electrical Motor Control (85-MT5) Rotating Machines 2 (85-MT2) Electrical Control Wiring (85-MT6B) Electrical Motor Control 2 (85-MT5 A-F) Power & Control Electronics (990-ELE1)	Power Distribution (85-MT7-B) AC Electronic Drives (85-MT101) DC Electronic Drives (85-MT102)
Electronics	Programmable Controllers (Allen Bradley 890-AB5500 with 890-PECB or 990-PAB53F) (Siemens 990-PS712F)	PLCs (990-PAB53F & 990-PS712F) Data Highway Ethernet (89-EN-AB5500) PLC Analog Control (89-AS-AB5500) PLC Process Control (89-PC-AB5500)	PLCs (990-PAB53F & 990-PS712F) Device Level Networks (89-RIO-AB5500) PLC Operator Interface (89-PVAB5500)
Process Control	Level & Flow Process Control (T5552)	Thermal Process Control (T5553) Data Acquisition (T5553-R1A) Analytical Process Control (T5554) Pressure Process Control (T5555)	
Thermal		Steam Systems (950-SH1)	
Fluid Power	Basic Hydraulics (850-H1 or 990-BH1) Basic Pneumatics (850-P1 or 990-PN1) Pneumatic Fitting Construction (94-PFC-1)	Intermediate Hydraulics (85-IH) Electro-Fluid Power (85-EH) Electronic Sensors (85-SN1) Intermediate Pneumatics (85-IP)	Advanced Hydraulics (85-AH) Hydraulic Troubleshooting (950-HT1) Piping Fabrication (950-PS1) Advanced Pneumatics (85-AP) Pneumatic Troubleshooting (950-PT1)
Mechanical	Mechanical Fabrication (950-MPF1) Mechanical Drives 1 (970-ME1)	Mechanical Drives 2 (97-ME2) Vibration Analysis (97-ME5A1) Rigging 1 (950-RGB1) Mechanical Drives 3 (97-ME3) Laser Alignment (97-ME2A) Central Lubrication (950-CL1)	Rigging 2 (95-RGB2) Mechanical Drives 4 (95-ME4) Conveyors (97-ME4-D & E) Machine Tool Axis (95-ME4-A & B) Centrifugal Pumps (950-PM1) Multiple Stage Pumps (95-PM1-A) Non-Hydraulic Pumps (95-PM1 B-H)
Safety	Safety Practices and Regulations (SA101) Personal Protective Equipment (SA102) Hazardous Communication (SA103) Confined Spaces (SA104) Lockout/Tagout (SA105) Accident Response (SA106)	Overhead Crane Safety (SA206)	
Workplace Effectiveness	Mathematics (MA101) Principles of Advanced Manufacturing (AM101) Communication Skills (PD101) Conflict Resolution (PD102) Working in Groups (PD103)		Trigonometry (MA304)

2400 Centennial Blvd.
 Jeffersonville, Indiana 47130 U.S.A.
 Phone: 812.288.8285 • Fax: 812.283.1584
 Toll Free in USA & Canada: 800.264.8285
 Email: contact@amatrol.com • www.amatrol.com

