

COMPREHENSIVE MECHATRONICS CURRICULUM

Tabletop mechatronics covers basic PLC programming, motor control, pick and place feeding, indexing, sorting, and parts storage, as well as robot material handling.

PLC PROGRAMMING CURRICULUM FOR ALLEN-BRADLEY

Learn PLC programming and ladder logic using Allen-Bradley PLCs

Automation Operation

- Control System Concepts
- Mechatronics Safety
- Machine Operator Functions

PLC Operation

- PLC Programming Software
- PLC Program Execution

PLC Event Sequencing

- Continuous Cycle Logic
- Stop Functions
- Time-Driven Sequencing

PLC Programming

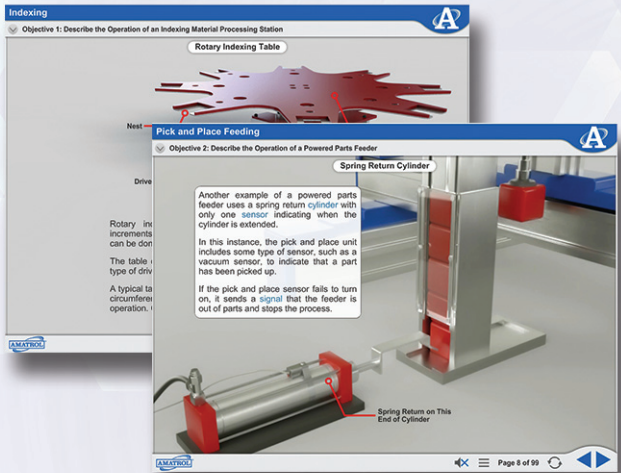
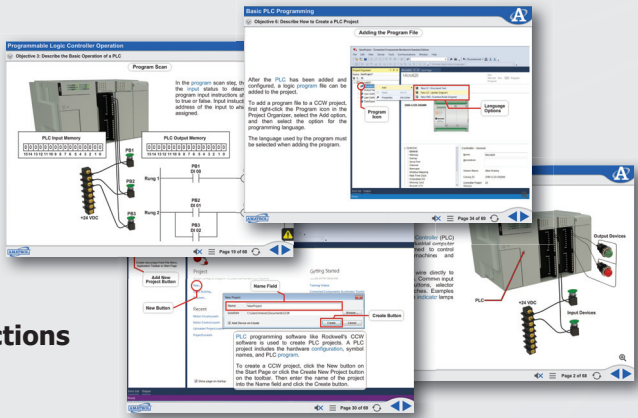
- PLC Addressing
- Editing and Documentation

PLC Motor Control

- Controlling Discrete Inputs
- Seal-In Program Logic
- Safety Interlocks

PLC Timer and Counter Instructions

- On-Delay Timers
- Off-Delay and Retentive Timers
- Counter Instructions



MECHATRONIC STATION CURRICULUM

Each station includes push button start/stop, on/off switch, quick connect terminal with test points, and PLC.

INVENTORY FEEDING

Station 1 (87-TMS1)

Pick and Place Feeding

- Material Feeding Systems
- Powered Parts Feeder Operation
- Pick and Place Pneumatic Manipulation
- Electro-Pneumatic Valve Adjustment
- Actuator Speed Adjustment
- Vacuum Adjustment

SORTING AND DISTRIBUTION

Station 3 (87-TMS3)

Sorting and Parts Storage

- Sorting Module Operation
- Parts Storage Operation
- Flat Belt Conveyor Adjustment
- Thru-Beam Photoelectric Adjustment
- Sorting Module Sequencing
- Multiple Station Operation

INSPECTION AND INDEXING

Station 2 (87-TMS2)

Indexing

- Index Station Operation
- Adjustment of Fork, Homing, and Proximity Sensors
- Stepper Motor Programming
- Homing Sensor Adjustment
- Stepper Motor Index Table Sequencing
- Index Station Sequencing

SERVO ROBOTICS

Station 4 (87-TMS4)

Servo Robot Material Handling

- Robot Station Operation
- Robot Traverse Axis
- Robot Work Envelope
- Conditional Commands
- Robot Sequencing



TABLETOP MECHATRONICS

POWERFUL AUTOMATION TRAINING
FOR PLC, ELECTRICAL, MECHANICAL
AND PNEUMATIC APPLICATIONS!

2400 Centennial Blvd.
Jeffersonville, Indiana 47130 U.S.A.
Phone: 812.288.8285 • Fax: 812.283.1584
Toll Free in USA & Canada: 800.264.8285
Email: contact@amatrol.com • www.amatrol.com



PRINTED IN U.S.A. • COPYRIGHT ©2019 • FORM 7049-C

EACH STATION IS A COMPLETE LEARNING SYSTEM WITH DIFFERENT TECHNOLOGIES!

World-Class Interactive Multimedia Curriculum

Amatrol's multimedia curriculum utilizes text with voiceovers, pictures, videos, stunning 3D animations, and interactive quizzes. For specifics on Mechatronics multimedia, see the back page of this brochure.



Allen-Bradley PLCs



Heavy Duty Industrial Components for Long Life

Plug and Play Interchangeable Controllers with Single Quick Connect

Safe 24 VDC Power

INVENTORY FEEDING

Station 1 (87-TMS1)

- Pick and place feeding
- Electro-pneumatic actuators
- Magnetic, reed, vacuum sensors
- 3-Axis pneumatic actuator system
- Vacuum pick-up
- Vacuum sensor
- Vacinator

INSPECTION AND INDEXING

Station 2 (87-TMS2)

- Multi-color stack light
- Retro-reflective, inductive, and fork sensors
- Stepper motor, index table, actuator

SERVO ROBOT STATION

Station 4 (87-TMS4)

Requires Amatrol's Pegasus Robot, Linear Traverse, and Flexible Workstation

Components integrate Tabletop Mechatronics and Pegasus Robot.

Components include:

- Feeder assembly with limit switch
- Parts storage chute
- Foot spacers

SORTING AND DISTRIBUTION

Station 3 (87-TMS3)

- Inductive, thru-beam, and retro-reflective sensors
- Electric solenoid actuators
- Flat belt conveyor with DC motor

Dual Function: Operator Station and I/O Simulator for PLC Training

Modular - start with one station and add others as budget allows

Use stations individually or combine stations for a complete automation process!