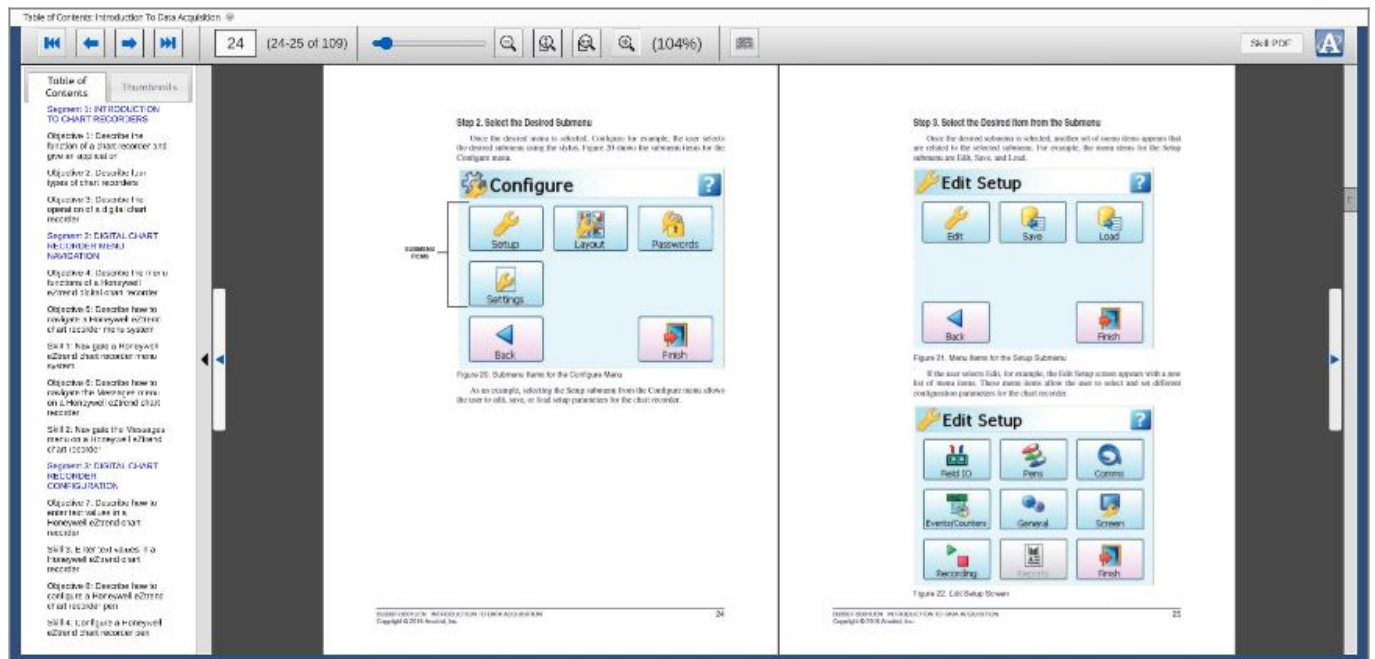


Three-Channel Data Acquisition eBook | Fundamentals Training



eBook: E33307

Amatrol's Three-Channel Data Acquisition eBook (E33307) teaches the fundamentals of data acquisition. Data acquisition systems consist of equipment used to receive, record, and analyze process data. This course teaches how to use chart recorders to collect and display process data. This course also covers how to use computer software to view and manipulate the data.

Teach Data Acquisition

What is a Chart Recorder?

A chart recorder is a device that creates a graphical representation of an electrical input signal. Changes in the electrical input signal cause the pen deflections to create the graph, which is often a line or circle that is printed on paper or a digital display. The graph represents the value of the process variable (PV) over time and is useful for observing and analyzing changes that occur in the PV. Chart recorders are used in the manufacturing industry to display one or more process variables (e.g. temperature, flow, level, pH, etc.) over time.

Four common types of chart recorders include: Vertical Chart Recorders, Flatbed Chart Recorders, Circular Chart Recorders, and Digital Chart Recorders. Each is an electrical or electromechanical device that uses pens to create graphs of sensor output signals over time.

Access eBook Online Curriculum

Three-Channel Data Acquisition eBook Allows Online Access to Curriculum

Amatrol's eBooks look like a real book and allow users to flip between pages with ease. Enhanced with features such as keyword searches and zoom controls that enable a user to quickly locate and view information, these eBooks are a fantastic learning tool. Amatrol's eBooks are available online and can be used by anyone with access to Amatrol's Learning Management System (LMS). Optionally, if you choose to use your own LMS, these eBooks are SCORM compatible to allow smooth integration into your current training system. Combined with our already extensive library of interactive multimedia titles, which are also SCORM compatible, users can now complete their entire course work online!

Additional Info

Requires:

- Computer (see [Computer Requirements](#))

Options:

- Three-Channel Data Acquisition Learning System ([T5554-R1A](#))
-

Address

**Amatrol
2400 Centennial Blvd
Jeffersonville, IN 47130**

Contacts

**email: contact@amatrol.com
phone: (800) 264 8285**