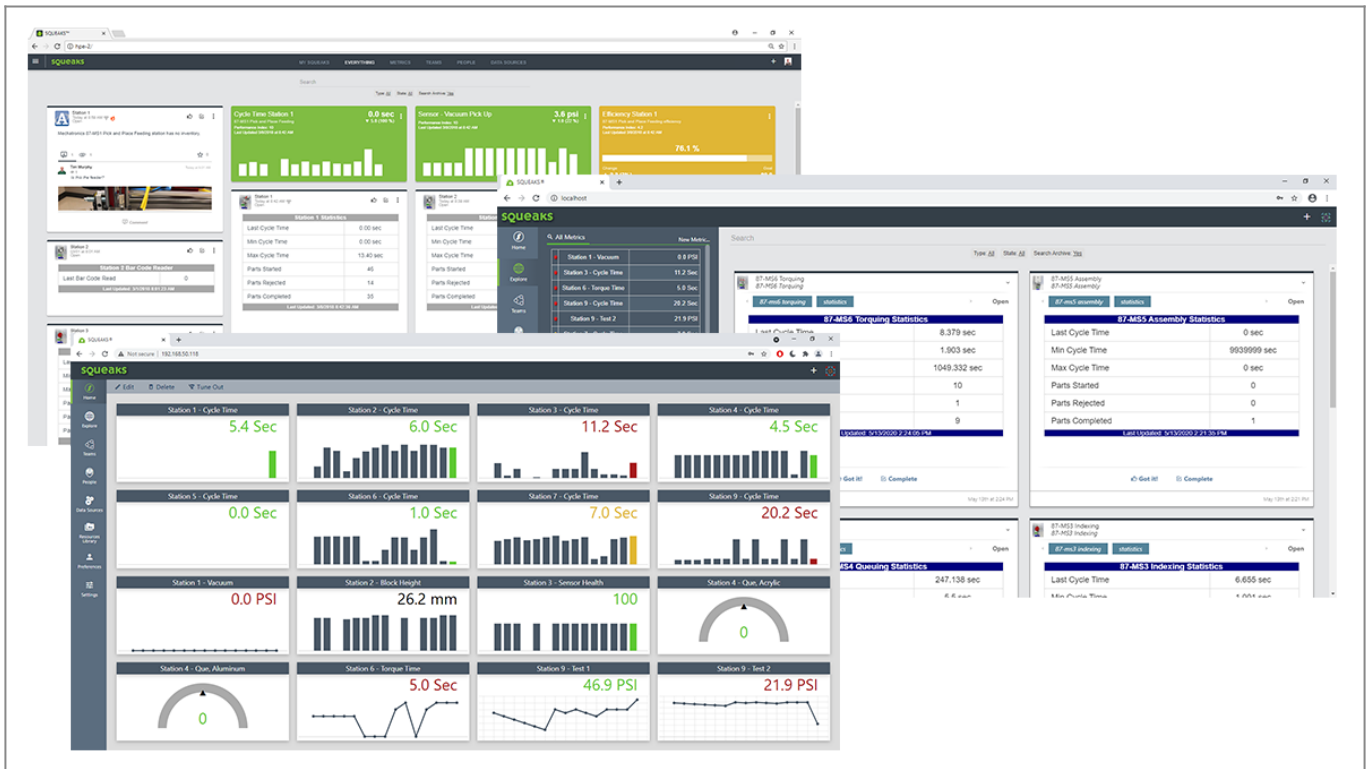


Tabletop Smart Factory Visual Communications | Allen-Bradley Learning System



Tabletop Smart Factory Visual Communications Learning System: 87-TVCAB

This system teaches use of web-based maintenance communications in a Smart Factory environment to efficiently generate automatic and manual maintenance push, email and web notifications and communication.

The [Smart Factory](#) network communications training systems feature real-world equipment learners will encounter on the job, including configuring an I/O-Link Master in a PLC project. The systems combine hands-on skills practice with in-depth multimedia curriculum for a well-rounded learning experience that will prepare learners to make an immediate impact in the technologically-advanced Smart Factory environments of the present and future.

Teach Hands-On Skills

Industrial Visual Communications Training Available Anytime, Anywhere

Each Visual Communications Training module comes with a 25-seat license of Windows-based software that can be accessed using a computer or laptop. Additionally, each seat comes with a Mobile App download, which is available for both Apple and Android mobile devices, and enables interface to the web-based maintenance communications software. With learning that can be both self-directed or instructor-led, industrial Visual Communications training has never been easier to use.

Learn Industry-Applicable Visual Communication Skills

With Amatrol's comprehensive curriculum, students cover a wide variety of Visual Communication skills. For example, learners will study Supervisory Control and Data Acquisition (SCADA). Additional skills and topics include operation and configuration of a cloud-based SCADA system, operation and configuration of a cloud-based maintenance management system, and understanding the I-Gear Squeaks software.

In-Depth Multimedia Curriculum

Engaging, Highly-Interactive Multimedia

Amatrol's curriculum features a highly-interactive, multimedia format that includes stunning 3D graphics and videos, voiceovers of all text, and interactive quizzes and exercises designed to appeal to learners with different learning styles. The combination of theoretical knowledge and hands-on skills solidifies understanding and creates a strong basis for pursuing more advanced skills.

Additional Info

Requirements:

- Inventory Station ([87-TMS1](#))
- Tabletop Mechatronics Learning System ([870-PTAB82](#))
- Ethernet Learning System ([87-TENAB82](#))
- Computer: [See requirements](#)
- Cloud Hosting (87-CLD1) Annually after First Year of Use

Address

**Amatrol
2400 Centennial Blvd
Jeffersonville, IN 47130**

Contacts

**email: contact@amatrol.com
phone: (800) 264 8285**