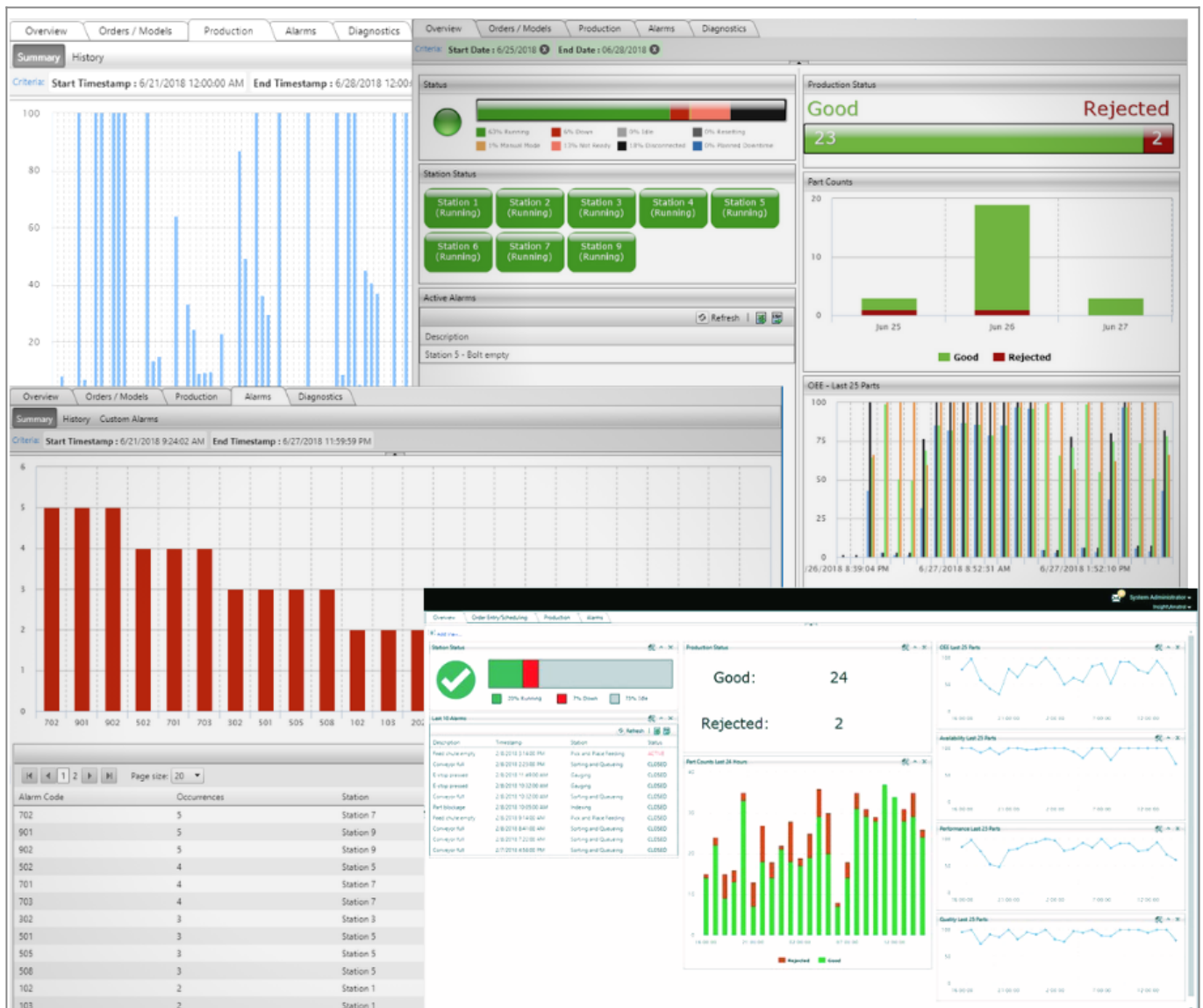


Tabletop Smart Factory Manufacturing Execution | Allen Bradley Learning System



Tabletop Smart Factory Manufacturing Execution Learning System, AB: 87-TMEAB

This system teaches the use of web-based production control, scheduling, and monitoring in a [Smart Factory](#) environment to efficiently oversee automated manufacturing processes.

The Smart Factory manufacturing execution training systems feature real-world equipment learners will encounter on the job, including a dual automatic parts feeder and manufacturing execution software. The systems combine hands-on skills practice with in-depth multimedia curriculum for a well-rounded learning experience that will prepare learners to make an immediate impact in the technologically-advanced Smart Factory environments of the present and future.

Teach Hands-On Skills

Study Smart Factory Components and Practice on Real-World Equipment

Amatrol's manufacturing execution training systems teach learners essential skills using industrial-quality equipment they'll use in the workplace. For example, learners will gain valuable hands-on experience with a dual automatic parts feeder and manufacturing execution software. Using this real-world equipment, learners will practice specific skills, such as configuring a cloud-based Supervisory Control and Data Acquisition (SCADA) system.

Learn Industry-Applicable Manufacturing Execution Skills

Amatrol's comprehensive curriculum covers a wide variety of important manufacturing execution skills. For example, learners will study lean production metrics, SCADA systems, overall equipment effectiveness (OEE), and enterprise resource planning systems. Additional skills and topics include programming a web-based SCADA system to track production statistics, interpreting a bill of materials, and operating a web-based manufacturing execution system.

In-Depth Multimedia Curriculum

Engaging, Highly-Interactive Multimedia

Amatrol's curriculum features a highly-interactive, multimedia format that includes stunning 3D graphics and videos, voiceovers of all text, and interactive quizzes and exercises designed to appeal to learners with different learning styles. The combination of theoretical knowledge and hands-on skills solidifies understanding and creates a strong basis for pursuing more advanced skills.

Additional Info

Requirements:

- Inventory Station ([87-TMS1](#))
- Inspection Station ([87-TMS2](#))
- Distribution Station ([87-TMS3](#))
- Servo Robot Station ([87-TMS4](#))
- Ethernet Learning System ([87-TENAB82](#))
- Computer: [See requirements](#)
- Cloud Hosting (87-CLD1) Annually after First Year of Use

Address

**Amatrol
2400 Centennial Blvd
Jeffersonville, IN 47130**

Contacts

**email: contact@amatrol.com
phone: (800) 264 8285**