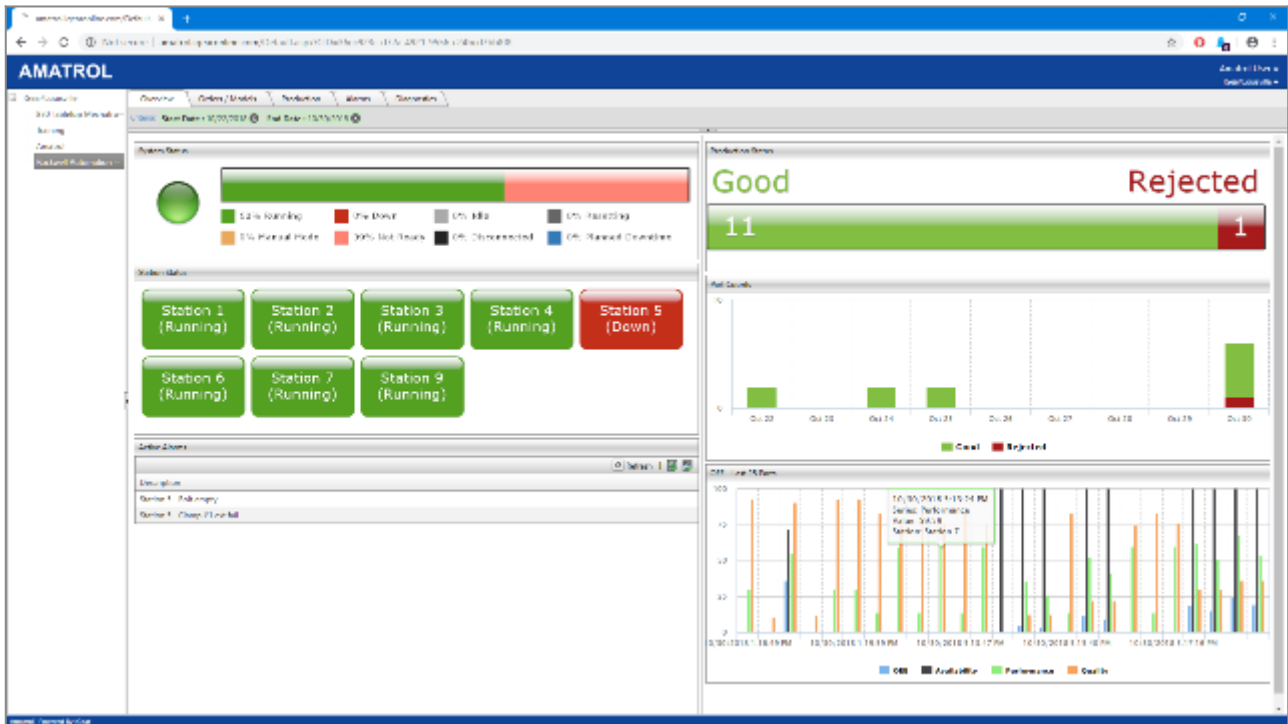


# Smart Factory Manufacturing Execution | Learning System



## Smart Factory Manufacturing Execution AB CompactLogix L16: 87-MEAB53A

The Smart Factory manufacturing execution training systems feature real-world equipment learners will encounter on the job, including a dual automatic parts feeder and manufacturing execution software. The systems combine hands-on skills practice with in-depth multimedia curriculum for a well-rounded learning experience that will prepare learners to make an immediate impact in the technologically-advanced Smart Factory environments of the present and future.

## **Study Smart Factory Components and Practice on Real-World Equipment**

Amatrol's manufacturing execution training systems teach learners essential skills using industrial-quality equipment they'll use in the workplace. For example, learners will gain valuable hands-on experience with a dual automatic parts feeder and manufacturing execution software. Using this real-world equipment, learners will practice specific skills, such as configuring a cloud-based Supervisory Control and Data Acquisition (SCADA) system.

## **Learn Industry-Applicable Manufacturing Execution Skills**

Amatrol's comprehensive curriculum covers a wide variety of important manufacturing execution skills. For example, learners will study lean production metrics, SCADA systems, overall equipment effectiveness (OEE), and enterprise resource planning systems. Additional skills and topics include programming a web-based SCADA system to track production statistics, interpreting a bill of materials, and operating a web-based manufacturing execution system.

## **Multimedia**

---

### **Engaging, Highly-Interactive Multimedia**

Amatrol's curriculum features a highly-interactive, multimedia format that includes stunning 3D graphics and videos, voiceovers of all text, and interactive quizzes and exercises designed to appeal to learners with different learning styles. The combination of theoretical knowledge and hands-on skills solidifies understanding and creates a strong basis for pursuing more advanced skills.

Click on the image below to view Amatrol's eLearning demo:

### **Anytime, Anywhere Access Promotes Self-Paced Learning**

In today's fast-paced, technology-driven world, it's more important than ever to extend the reach of industrial skill training beyond the borders of traditional classrooms. Amatrol's eLearning meets the challenge for flexibility by offering in-depth, comprehensive technical skills training via an intuitive, easy-to-use web-based Learning Management System (LMS).

With anytime, anywhere online access, Amatrol's eLearning allows learners to set their own pace at home, on the job, in a traditional class setting, or a blended approach of these options. Click here to learn more about [Amatrol's eLearning and LMS](#).

---

#### **Address**

**Amatrol  
2400 Centennial Blvd  
Jeffersonville, IN 47130**

#### **Contacts**

**email: [contact@amatrol.com](mailto:contact@amatrol.com)  
phone: (800) 264 8285**