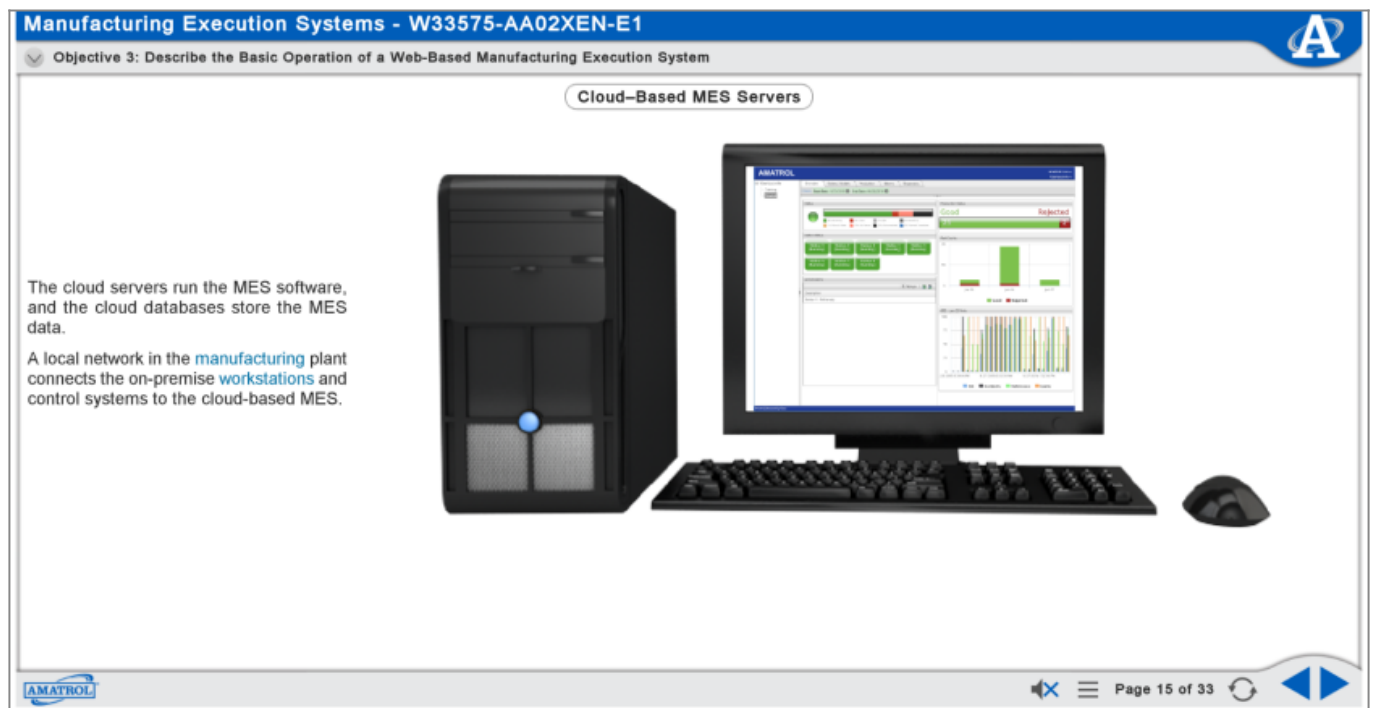


Tabletop Smart Factory Manufacturing Execution |Allen Bradley



Tabletop Smart Factory Manufacturing Execution Multimedia Course, M33575

This system teaches the use of web-based production control, scheduling, and monitoring in a [Smart Factory](#) environment to efficiently oversee automated manufacturing processes.

The Smart Factory manufacturing execution training systems feature real-world scenarios learners will encounter on the job, including a dual automatic parts feeder and manufacturing execution software. The systems provide in-depth multimedia curriculum for a well-rounded learning experience that will prepare learners to make an immediate impact in the technologically-advanced Smart Factory environments of the present and future.

Teach Hands-On Skills

Study Smart Factory Components and Practice on Real-World Equipment

Amatrol's manufacturing execution training systems teach learners essential skills they'll use in the workplace. For example, learners will gain experience with a dual automatic parts feeder and manufacturing execution software. Using this real-world equipment, learners will practice specific skills, such as configuring a cloud-based Supervisory Control and Data Acquisition (SCADA) system.

Learn Industry-Applicable Manufacturing Execution Skills

Amatrol's comprehensive curriculum covers a wide variety of important manufacturing execution skills. For example, learners will study lean production metrics, SCADA systems, overall equipment effectiveness (OEE), and enterprise resource planning systems. Additional skills and topics include programming a web-based SCADA system to track production statistics, interpreting a bill of materials, and operating a web-based manufacturing execution system.

In-Depth Multimedia Curriculum

Engaging, Highly-Interactive Multimedia

Amatrol's curriculum features a highly-interactive, multimedia format that includes stunning 3D graphics and videos, voiceovers of all text, and interactive quizzes and exercises designed to appeal to learners with different learning styles. The combination of theoretical knowledge and hands-on skills solidifies understanding and creates a strong basis for pursuing more advanced skills.

Additional Info

Additional Requirements

- Computer: [See requirements](#)
-

Address

**Amatrol
2400 Centennial Blvd
Jeffersonville, IN 47130**

Contacts

**email: contact@amatrol.com
phone: (800) 264 8285**