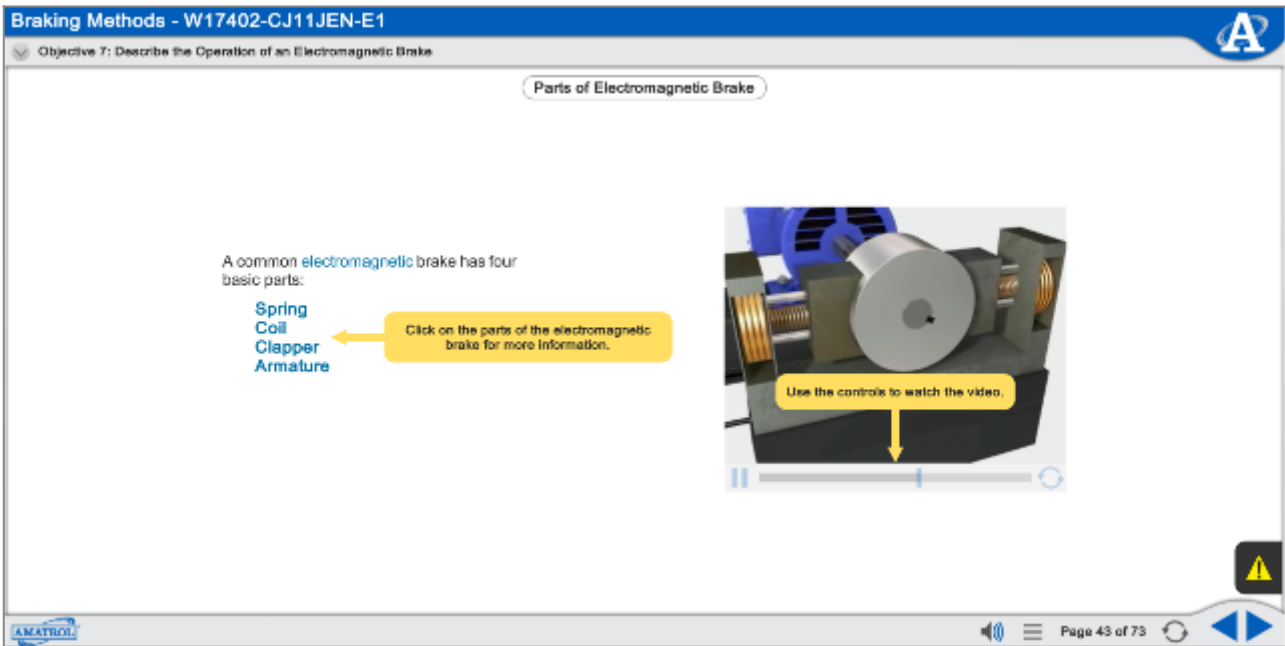


Motor Braking Training | eLearning Course



eLearning Course: M17402

Amatrol's Multimedia Courseware – Motor Braking (M17402) provides an in-depth look at the common electric motor braking methods found in industrial, commercial, and residential applications. Learners using Amatrol's motor braking eLearning course begin by studying drum switch, pushbutton, and timer plugging. From these building blocks, learners begin practicing industry-relevant skills, like electromagnetic, DC injection, and dynamic braking.

In-Depth Motor Braking Curriculum

In-Depth, Comprehensive Motor Braking Curriculum Connected to Real-World Skills

Amatrol's motor braking eLearning course covers important topics, such as:

Drum Switch Plugging

Learners begin with an introduction to drum switch plugging. Individual lessons focus on topics like motor braking methods and the operation of a drum switch plugging circuit. Learners will also practice skills, such as connecting and operating a motor plugging circuit using a drum switch.

Pushbutton and Timer Plugging

Learners will study the basic principles of pushbutton and timer plugging. Individual lessons focus on topics like the operation of manual motor control and timer-controlled plugging circuits. Learners will also practice skills, such as troubleshooting a manual motor control plugging circuit and connecting and operating a motor plugging circuit to brake a motor in either direction.

Electromagnetic Braking

Learners using Amatrol's motor braking eLearning course will study basic principles of electromagnetic braking. Individual lessons focus on topics like the operation and advantages of electromagnetic brakes. Learners will also practice skills, such as connecting and operating a motor braking circuit using an electromagnetic brake.

DC Injection and Dynamic Braking

Learners will study basic principles of DC injection and dynamic braking. Individual lessons focus on topics like the advantages of DC injection braking and the operation of a dynamic braking circuit. Learners will also practice skills, such as connecting and operating a motor braking circuit using DC injection braking and troubleshooting a DC injection braking control circuit.

Extensive Braking Knowledge for Real-World Troubleshooting

Two other kinds of braking methods covered by this industrial motor control training system are electromagnetic braking and DC braking. Learners will study about the inner-workings of electromagnetic brakes, how to operate them, how the output from a DC braking station can be used to control them, and the advantages and disadvantages of using them.

Learners then apply this knowledge by connecting and operating a motor braking circuit using an electromagnetic brake and a three phase induction motor. They will then connect and operate a motor braking circuit using DC injection braking. The included components are heavy-duty and industrial quality ready for repeated use. The DC braking station includes a DC power source, control relay, and step-down transformer.

The motor braking system also covers motor braking troubleshooting by allowing learners to practice troubleshooting faults in an electrical motor control plugging circuit and a DC injection braking control circuit.

Interactive eLearning with Learning Management System

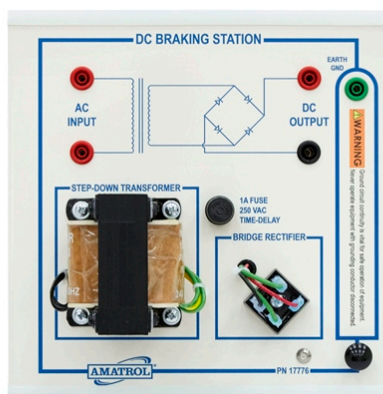
Highly-Interactive Multimedia Format Appeals to All Learning Styles

Amatrol's motor braking eLearning course features interactive eLearning curriculum that integrates various types of learning methods to create an engaging, effective learning experience. Amatrol's multimedia [eLearning](#) curriculum includes text with voiceovers, videos, 3D animations, pictures, and interactive activities, quizzes, and self-reviews.

Free Learning Management System (LMS)

Amatrol eLearning is easy-to-use for both students and instructors. Its web-based interface is simple to navigate and available on any WebGL-compatible Internet browser. Instructors love Amatrol eLearning for its simple, yet sophisticated Learning Management System (LMS). The LMS allows instructors to create custom courses, monitor student participation, track course progress, assess knowledge levels prior to a course, and test knowledge levels after completion. Learners appreciate the fact that they can start and stop as needed, moving through each Amatrol course at their own pace. If a self-review reveals that they didn't understand a particular topic as well as they thought they did, they can revisit it before moving on.

Additional Info



Requires:

- Computer (see [Computer Requirements](#))

Options:

- Motor Braking Learning System ([85-MT5A](#))
-

Address

**Amatrol
2400 Centennial Blvd
Jeffersonville, IN 47130**

Contacts

**email: contact@amatrol.com
phone: (800) 264 8285**