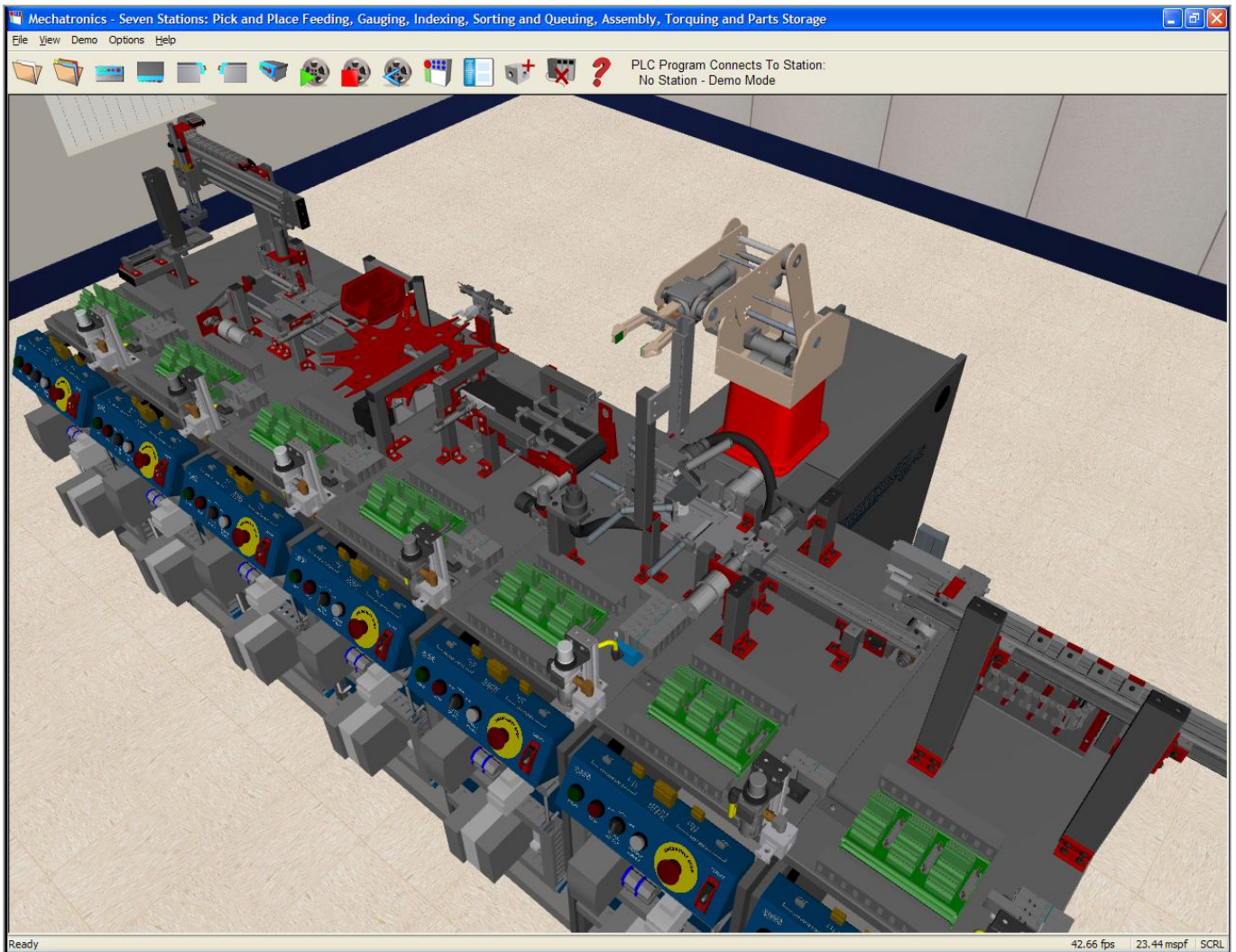


MechaSIM Mechatronics Simulation Training System | Allen-Bradley CompactLogix L16



Learning System: 87-MSSAB53A

Mechatronics systems use increasingly sophisticated automation equipment. With simulation software, such as Amatrol's MechaSIM Mechatronics Simulation training software for the L16 Allen-Bradley CompactLogix 5300 PLC (87-MSSAB53A), a user can create and test a program before downloading the program to the PLC. This saves considerable time in testing and troubleshooting programs and prevents costly damage to equipment.

Simulate PLC Programs

What is Graphical Simulation Software?

Graphical simulation software provides a virtual version of the real environment. This could be a single object or a group of objects that interact with one another. A graphical representation of a PLC, for example, operates the same as a real-world PLC. The program operation is observed and modified until the program runs as intended. The resulting program can then be downloaded to the PLC and tested.

Graphic simulation software shows the operation of each piece of hardware in response to each input and output. The programmer can watch cylinders extend and retract, parts move from point A to point B, and so on. An

example of geographical simulation software is the MechaSIM software. The program is downloaded to the PLC and the virtual Mechatronics stations are started. The operator monitors the operation from many different angles, watching for faults or collisions with hardware. This provides the programmer with the opportunity to test and modify the program before downloading it to the PLC connected to the hardware.

In-Depth Curriculum

In-Depth Mechatronics Simulation Curriculum

The MechaSIM Mechatronics Simulation training system includes in-depth, comprehensive curriculum that provides a strong foundation in mechatronics simulation, including these major topics: graphical simulation; using demo mode to simulate mechatronics station operation; and using MechaSIM to simulate a mechatronics PLC program. The curriculum also features important hands-on skills to prepare learners for real-world situations, such as simulating programs for mechatronics systems using MechaSIM and simulating multiple stations using a pre-written program.

Curriculum Available in Optional eBook Format

Amatrol's [eBooks](#) look like real books and allow users to flip between pages with ease. Enhanced with features such as keyword searches and zoom controls that enable users to quickly locate and view information, eBooks are fantastic learning tools. They are available online and can be used by anyone with access to Amatrol's Learning Management System (LMS). Optionally, for those who choose to use their own LMS, eBooks are SCORM compatible to allow smooth integration into other training systems. Combined with our already extensive library of interactive multimedia titles, which are also SCORM compatible, users can now complete their entire course work online!

Additional Info

Requires:

- Allen-Bradley CompactLogix L16 PLC (may use processor from 870-AB53A)
- RSLinx Gateway Connectivity Software (22068)
- RS Logix 5000 Mini Software (for Education) (82-8RSM) (82-8RSMI for all other organizations)
- Computer (see [Computer Requirements](#))

Options:

- Interfaces to 87-MS1-7
- MechaSIM Mechatronics Simulation - AB CompactLogix L16 eBook (E24996)

Address

**Amatrol
2400 Centennial Blvd
Jeffersonville, IN 47130**

Contacts

**email: contact@amatrol.com
phone: (800) 264 8285**